



*"When West meets East", Eclecticism...*

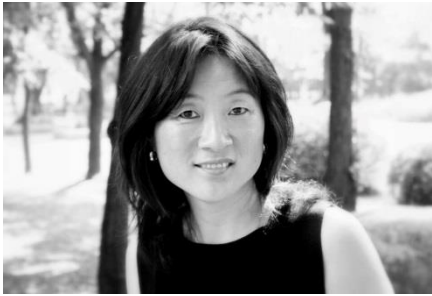
Kim Dauphin, 김은애  
Painter, 화가

Website: [www.kimdauphin.com](http://www.kimdauphin.com)

Email: kimdauphin14@gmail.com

Rixensart, Belgium, +32(0)485 332 993

© Kim Dauphin, 2015



*Kim Dauphin started painting in 2006.*

*During her travels in Calabria (Italy), she discovered the impressive beauty and raw power of this landscape.*

*That was there where she found her passion for oil painting.*

*Later in her life, she returned to her birth country Korea.*

*An important decision because it contributed to her inspiration and creativity.*

*This results in eclectic paintings based on Western and Oriental art.*



Gentle Wind, 산들바람 (2015), acrylic 72x50 cm



Hello, 안녕 ... (2015), acrylic 65x50 cm

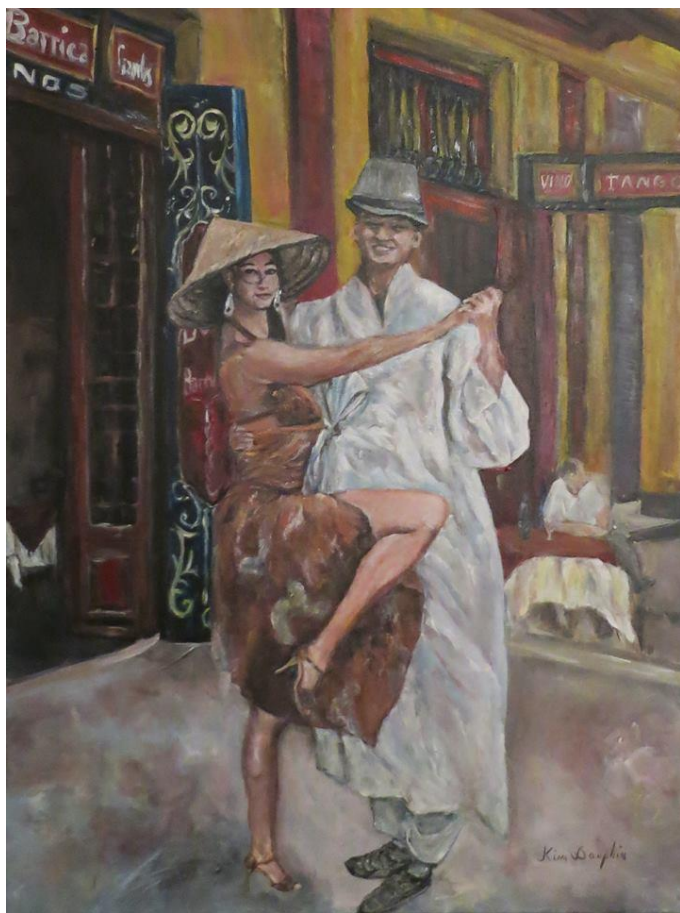




*Sunim (2015), acrylic 90x60 cm*

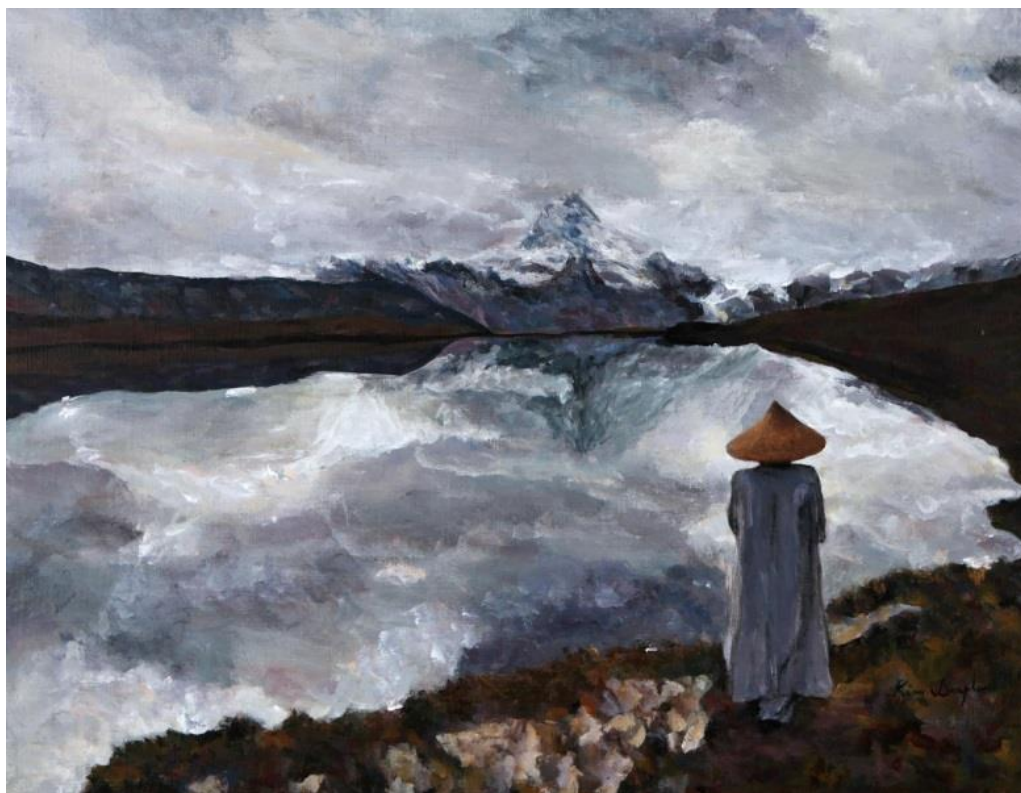


*Sunim in the desert (2015), acrylic 70x90 cm*



*Sunim dancing tango (2015), acrylic 60x80 cm*





*Sunim at the mountain (2013), acrylic 40x53 cm*



*The dancer (2015), acrylic 60x80 cm*



*The woman in hanbok (2014), acrylic 60x70 cm*



*The woman in hanbok (2014), acrylic 70x60 cm*



*The woman in hanbok (2014), acrylic 60x80 cm*





*The three women in hanbok (2012), acrylic 50x40 cm*



*The dancers (2013), acrylic 53x45 cm*



*Samulnori (2014), acrylic 60x50 cm*



*Chumsawi (2014), acrylic 60x50 cm*





*The dancer (2013), acrylic 53x45 cm*

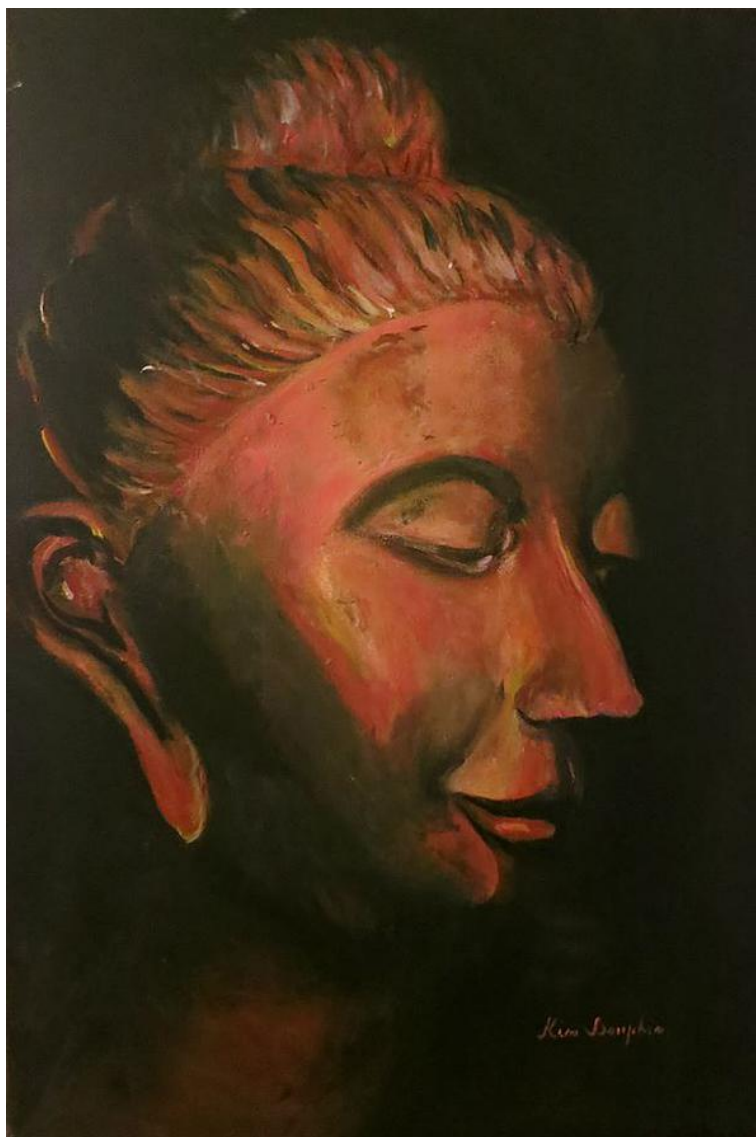




*The dancers (2014), acrylic 80x70 cm*



*The dancer (2015), acrylic 40x50 cm*



*Serenity (2014), acrylic 40x60 cm*



*Seungmu (2013), acrylic 40x53 cm*



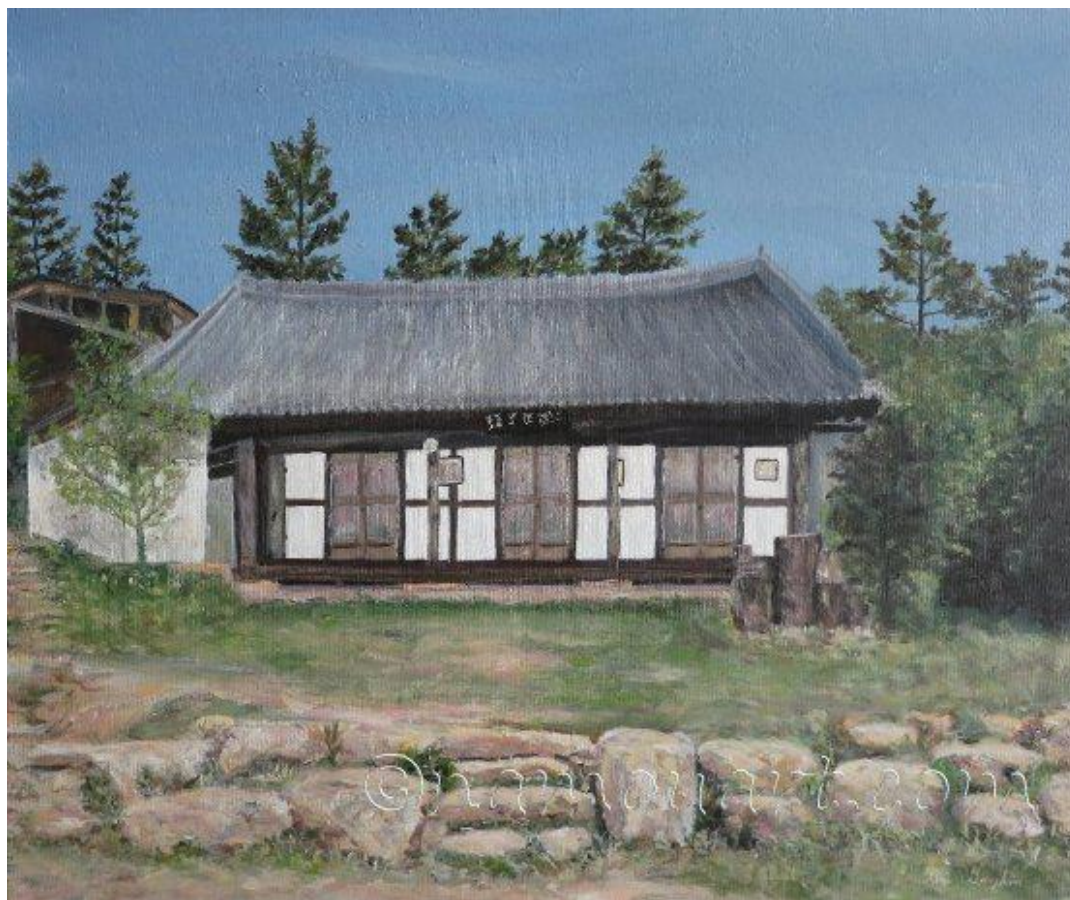


*Traditional village (2014), acrylic 80x40 cm*



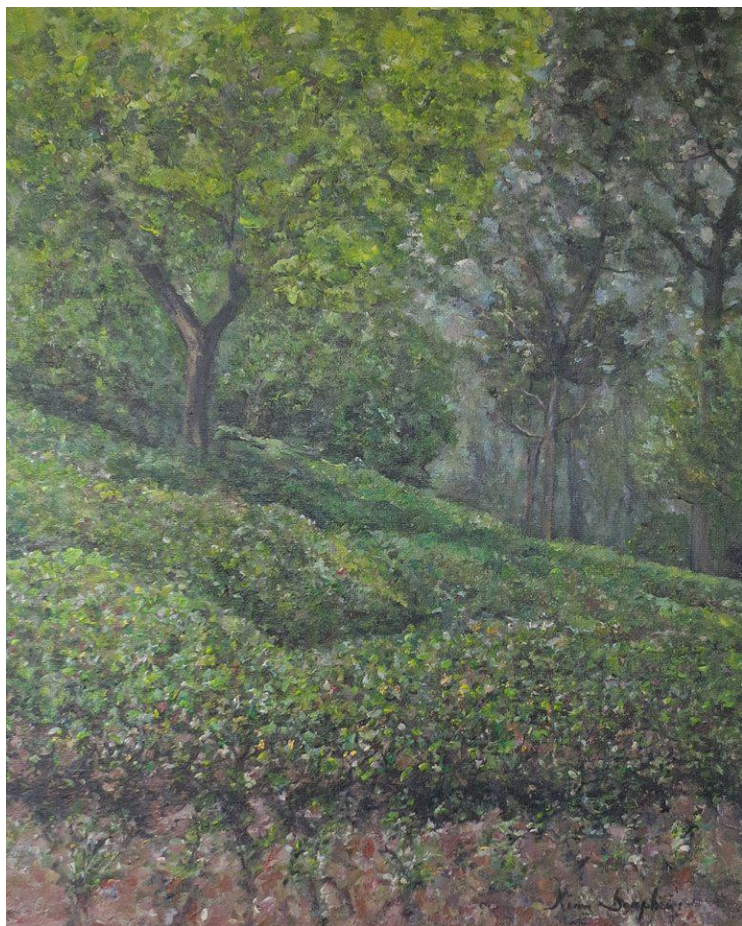


*Park at Seoul (2014), acrylic 80x40 cm*



*The house of Kaenam (2012), acrylic 60x50 cm*





*Tea plantation at Kaenam (2014), acrylic 40x50 cm*



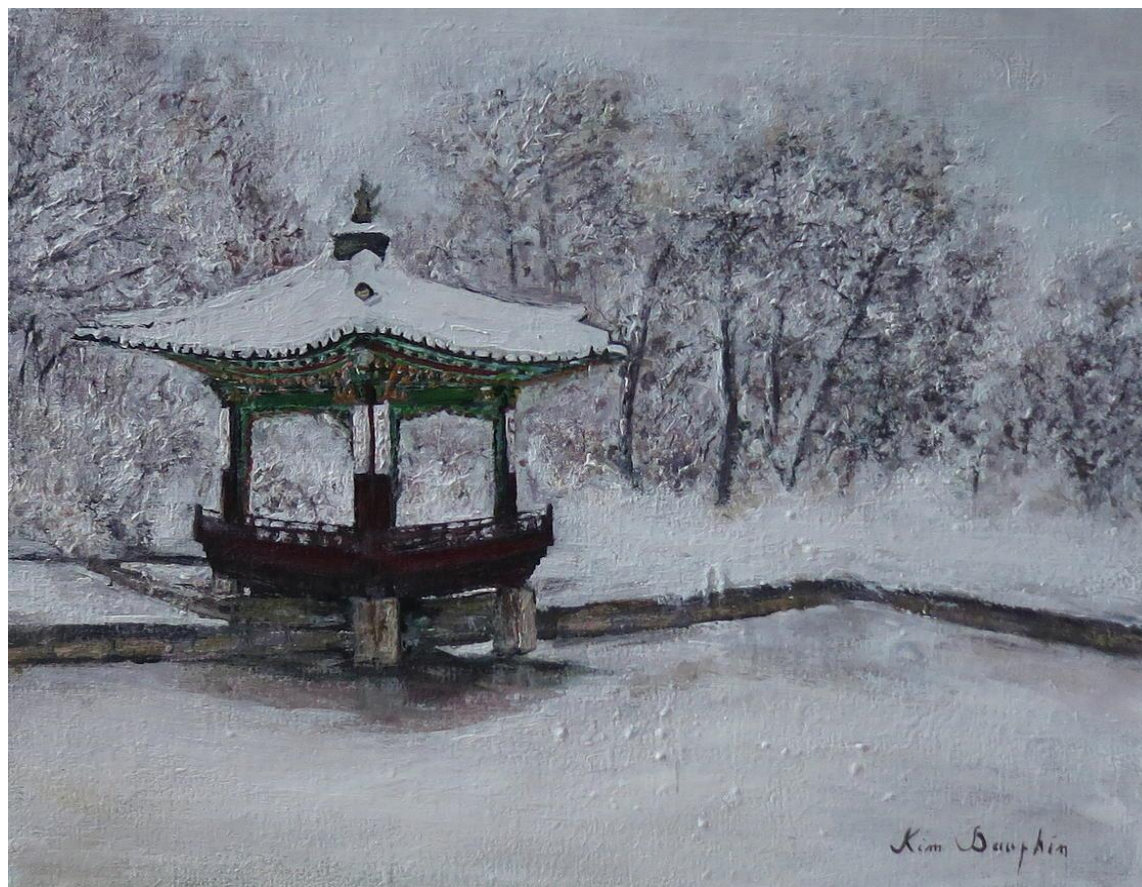
*Changdeokgung Palace, Seoul (2014), acrylic 40x80 cm*





*Secret garden in autumn (2014), acrylic 40x30 cm*





*Secret garden in winter (2014), acrylic 30x25 cm*



*The autumn landscape (2014), acrylic 50x40 cm*

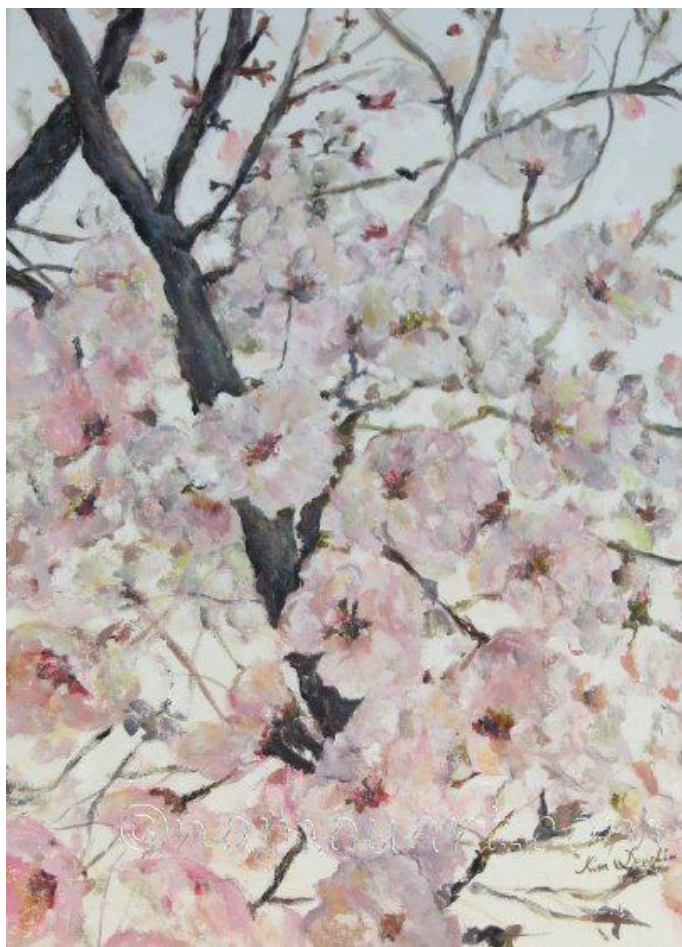




*Busan in spring (2014), acrylic 60x50 cm*



*The cherry blossoms of Busan (2014), acrylic 46x38 cm*

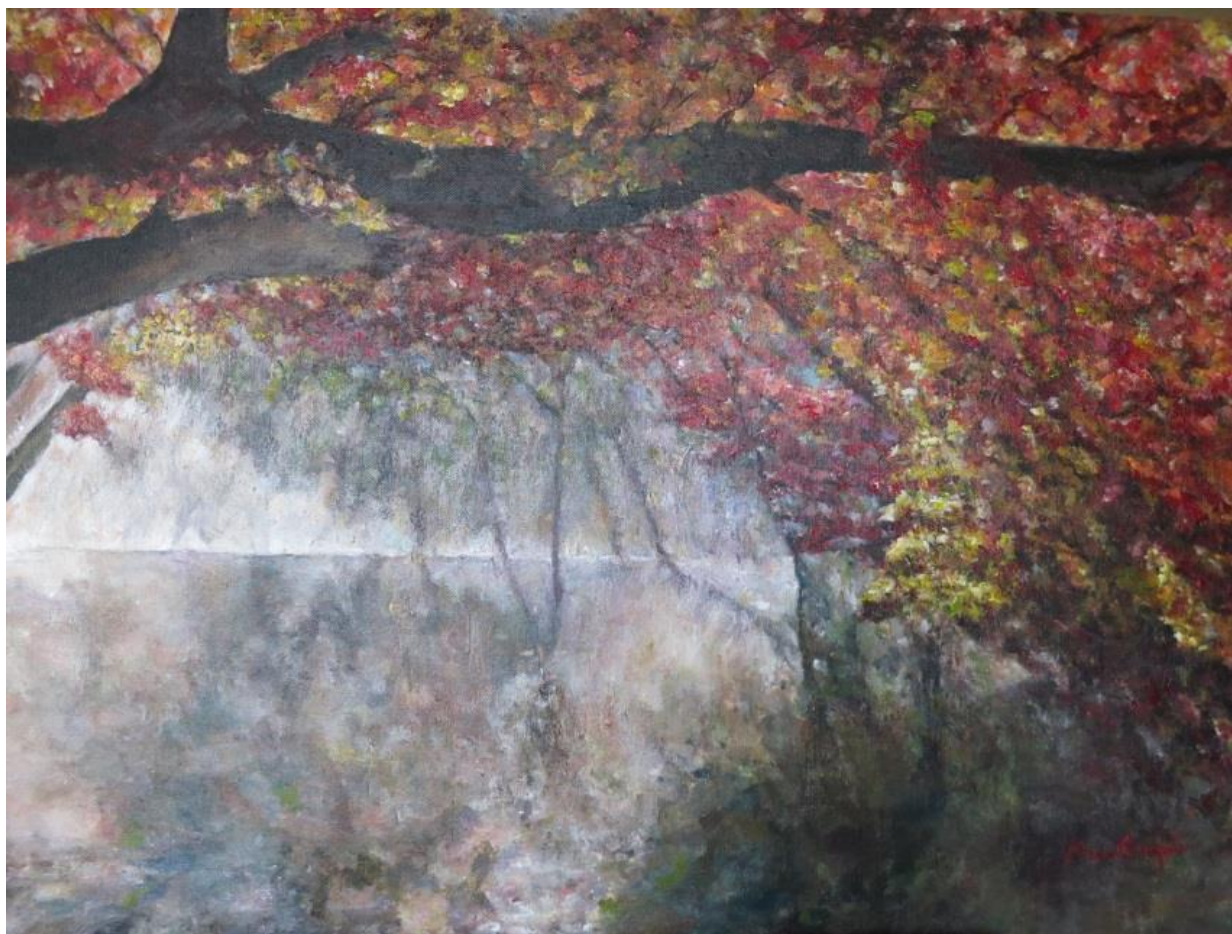


*The cherry blossoms of Busan (2014), acrylic 40x30 cm*





*The autumn leaves (2013), acrylic 53x40 cm*



*National Park of Seoraksan (2013), acrylic 80x60 cm*

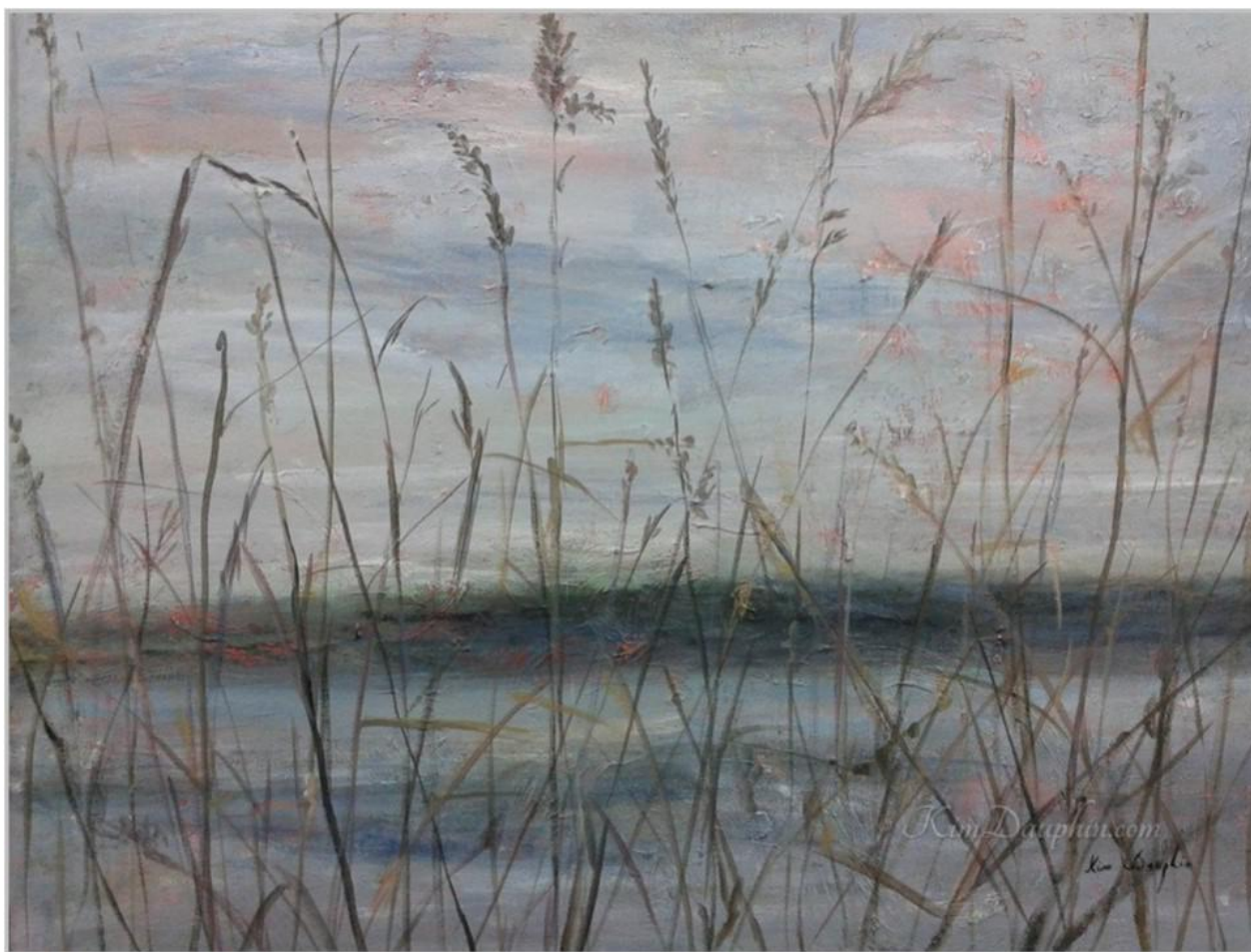


*The red forest (2013), acrylic 53x45 cm*





*The forest in spring (2015), acrylic 60x80 cm*



*The wild grass (2013), acrylic 70x60 cm*





*The herbs (2015), acrylic 50x40 cm*



*The kimchi pots (2014), acrylic 50x40 cm*



*The forest of Yongmunsa (2014), acrylic 50x40 cm*





*Korean heritage (2012), acrylic 60x50 cm*



*Lotus flowers* (2015), acrylic 90x60 cm





*The mountains at dawn (2014), acrylic 50x30 cm*

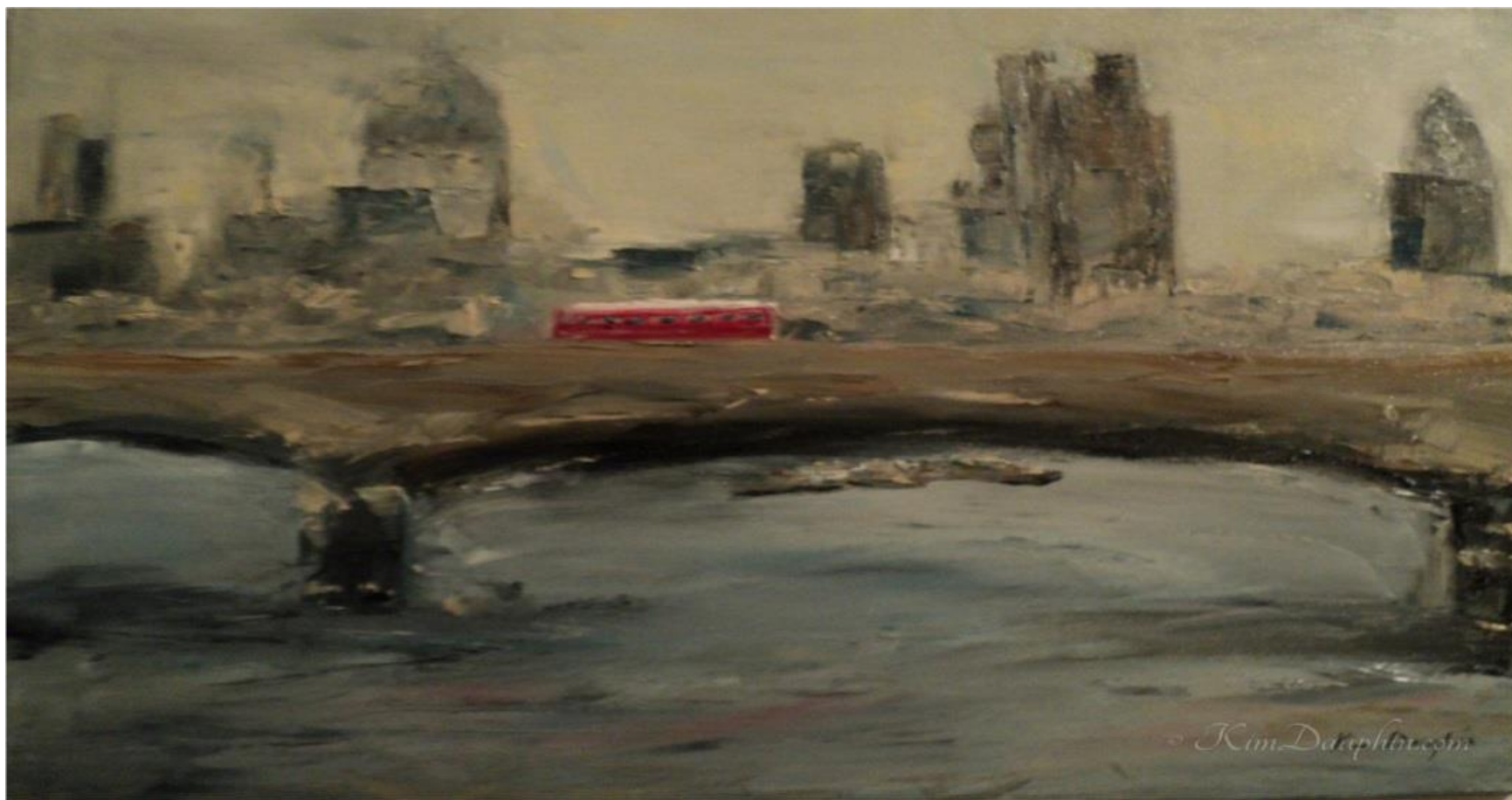


*On a rainy day (2014), acrylic 50x50 cm*



*The Sablon (2011), oil 60x40 cm*





London (2011), oil 60x40 cm





*The olive trees of Calabria (2012), oil 80x70 cm*



*The sunset at Tropea, Italy (2011), oil 80x70 cm*



*The field of poppies (2012), oil 70x80 cm*





*The forest of Soignes (2011), oil 80x70 cm*



*The lake of Genval (2010), oil 80x70 cm*



*The hydrangeas (2012), oil 60x50 cm*





*The white flowers (2012), oil 80x60 cm*



*The three poppies (2010), oil 50x50 cm*



*The fish, A. Lorenzo (2007), oil 60x40 cm*



